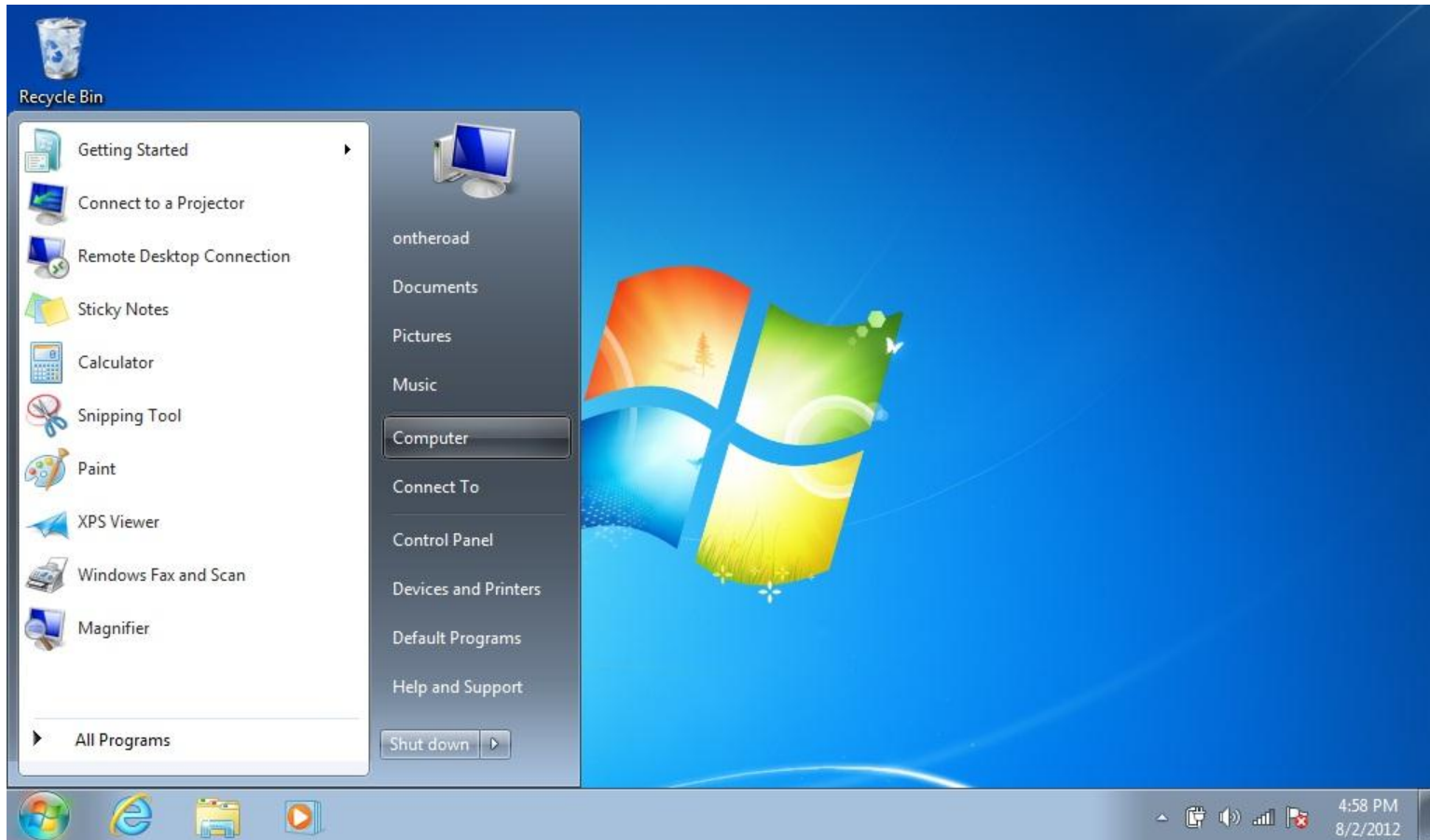
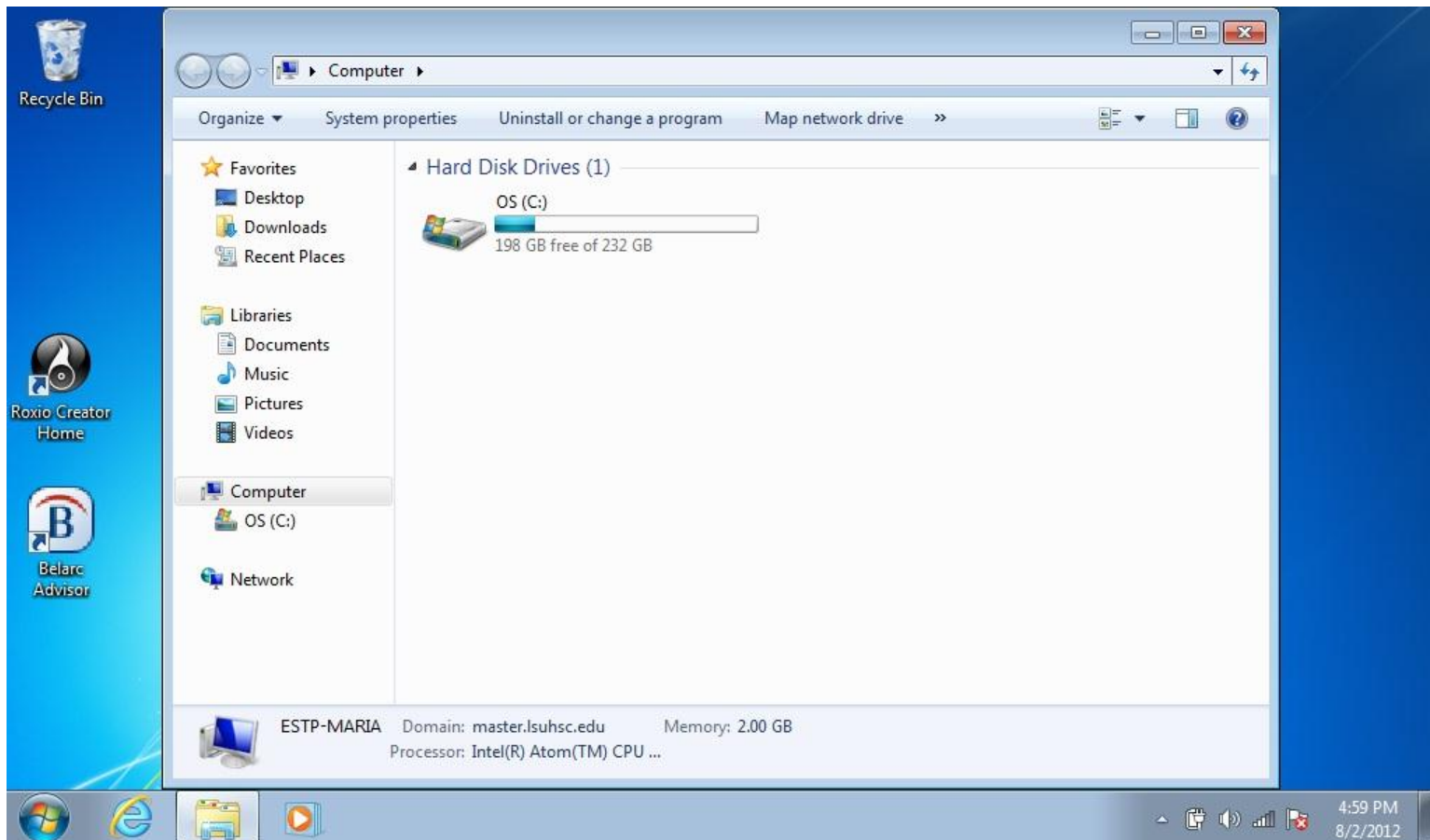


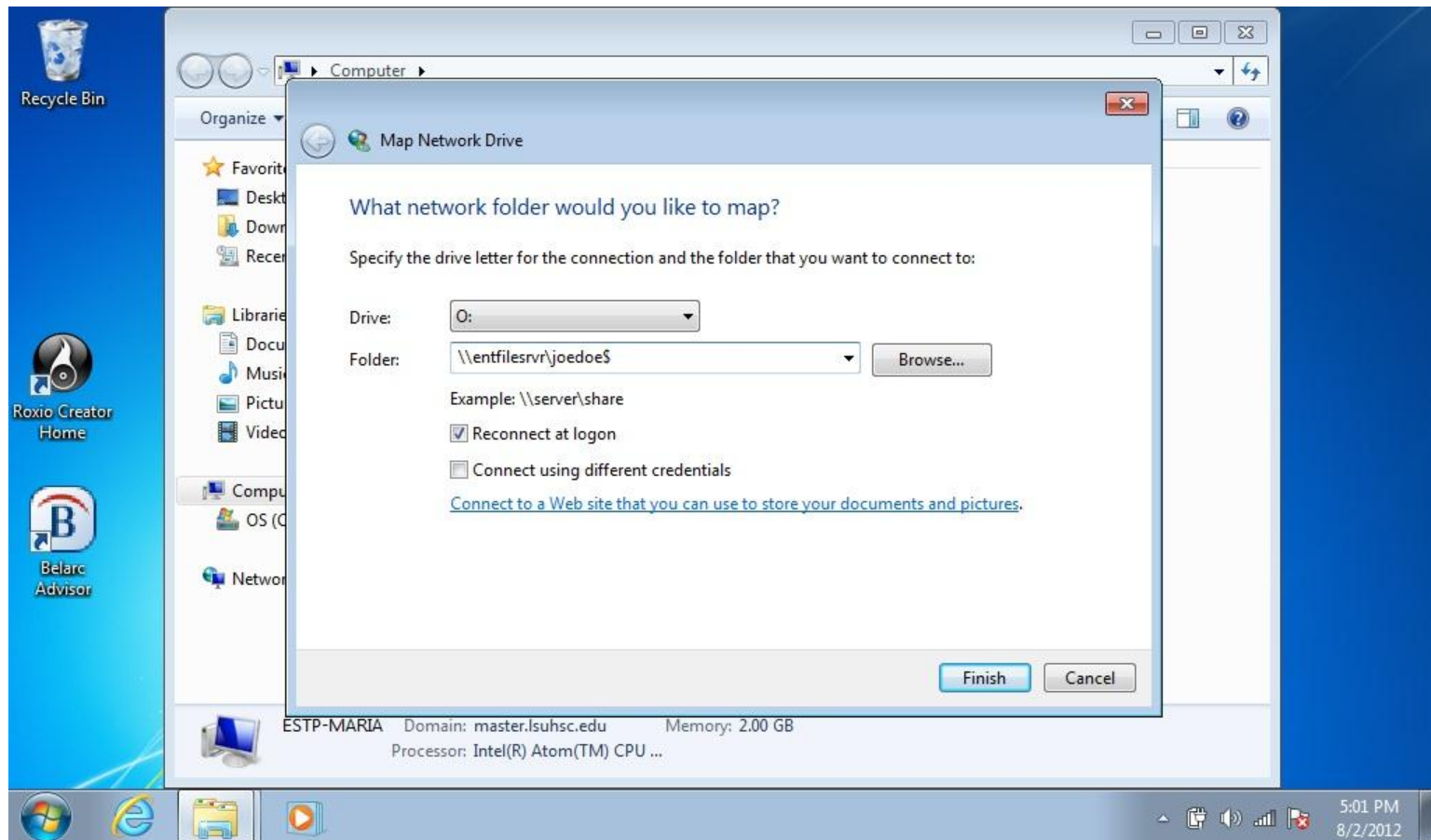
After connecting to the LSUHSC-Secure wireless network, click the Start button -> Computer



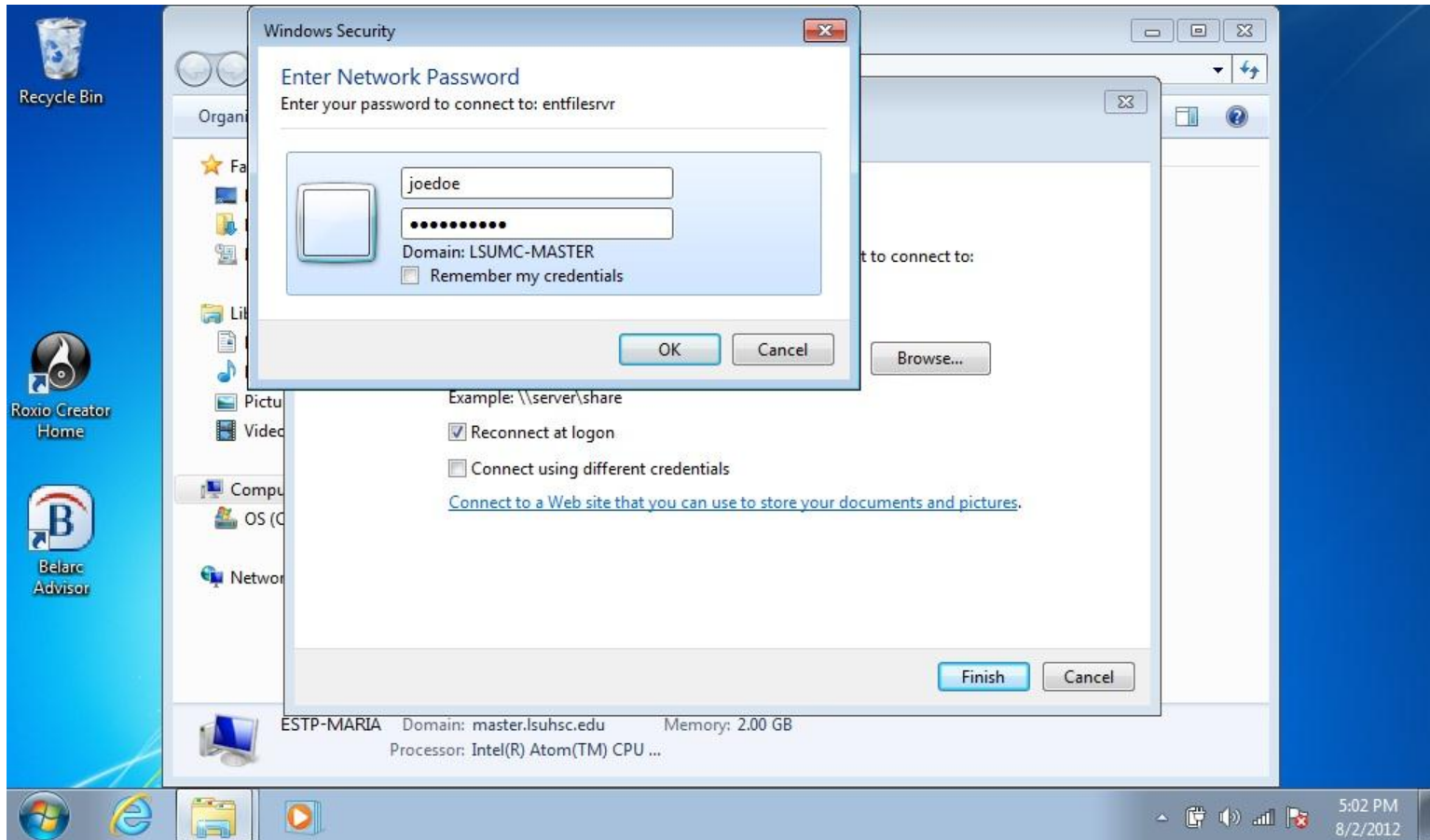
On the menu bar, select “Map network drive”. If it doesn’t appear on your menu bar, hit the ALT key and the “T” key at the same time.



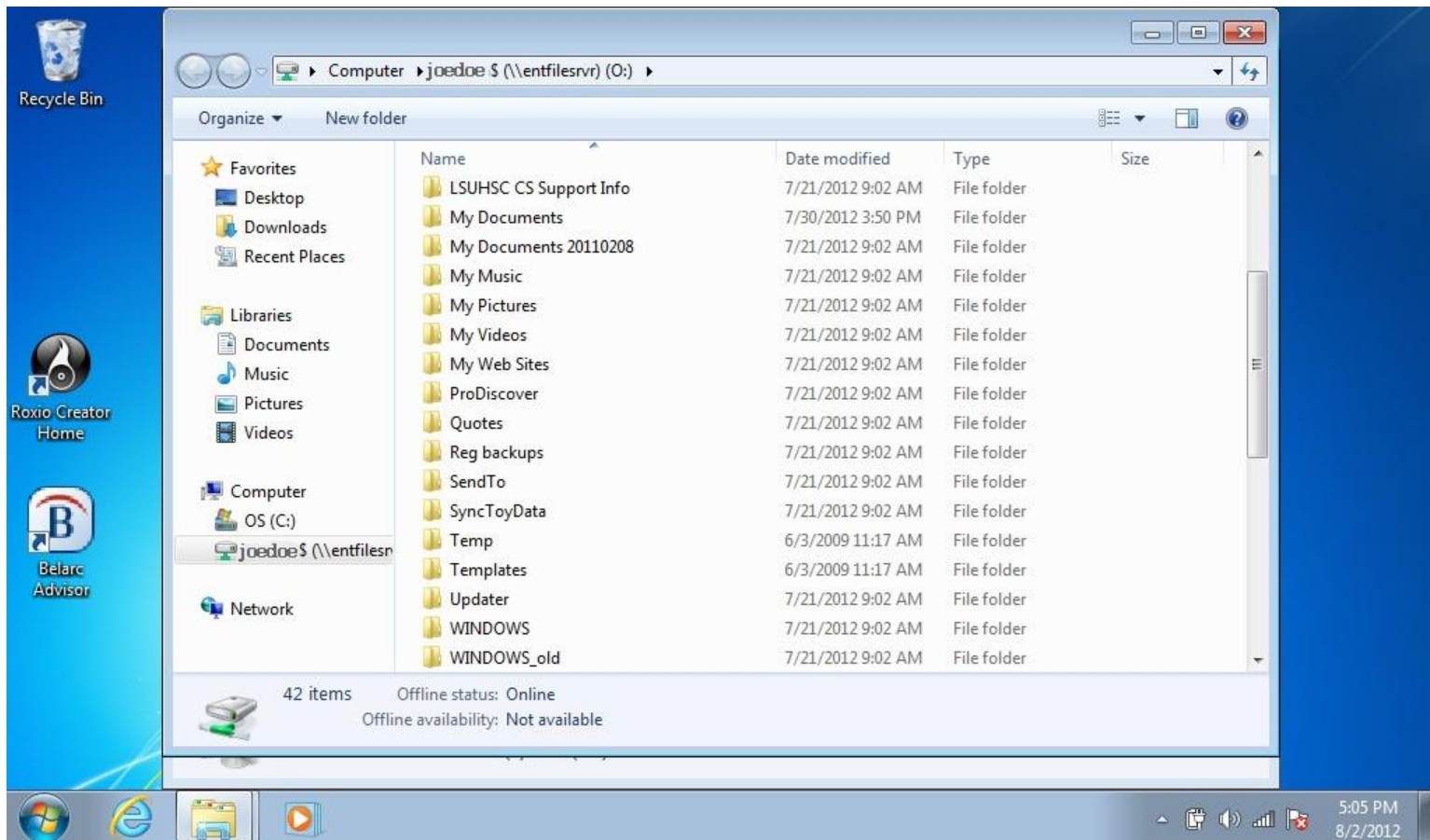
Select the letter “O” from the Drive box dropdown menu -> in the Folder box, type \\entfilesrvr\your userid\$. Be sure to put the “\$” immediately following your userid. Put a check mark in the box preceding “Reconnect at logon” -> Click the “Finish” button



Enter your username and password. If you do not see “Domain: LSUMC-MASTER”, you may need to enter your username as: lsumc-master\username -> Click OK



This is where you can save and access your files. To exit, you can click on the red “X” in the upper right-hand corner.



You should see your O: drive listed along with your other drives. If you see a red “X” over the O: drive when you log in, you can simply double click to access it, if you are connected to the LSUHSC-Secure wireless network.

