
2025

SAHP CHRONICLES: ROARING SUCCESSES IN ALLIED HEALTH

LSU Health
NEW ORLEANS

School of Allied Health Professions



ABOUT LSUHNO SAHP

The School of Allied Health Professions (SAHP) at Louisiana State University Health – New Orleans (LSUHNO) was established in 1970 by the Board of Supervisors and comprises both undergraduate and graduate programs.

Baccalaureate degrees (Bachelor of Science) are offered in Cardiopulmonary Science and Medical Laboratory Science. The Department of Communication Disorders offers a Master of Communication Disorders degree in Speech-Language Pathology and a Doctor of Audiology degree. The Department of Occupational Therapy offers the Master of Occupational Therapy degree, the Department of Physical Therapy offers a Doctor of Physical Therapy degree, and the Department of Counseling offers the Master of Health Sciences degree. The SAHP also includes the Human Development Center, which provides programs to increase the capacity of professionals in health, mental health, education, and rehabilitation to support individuals with developmental and acquired disabilities and their families to participate in all aspects of community life.

The SAHP provides multidisciplinary outpatient services to achieve diversity of patient objectives that include diagnostic, therapeutic, and restorative services to enable patients to achieve as much functional, social, and occupational independence as is reasonably possible.

OUR MISSION

The SAHP is committed to providing quality education, leadership, research, and public service through direct patient care and community outreach by clinical healthcare professionals and educators.



FROM THE DEAN

ERIN M. DUGAN, PH.D.

It is my pleasure to welcome you and share highlights from the School of Allied Health Professions. Our mission is grounded in academic excellence, innovation, and service, and this year has been a strong reflection of that commitment.

This year, we strengthened our focus on interprofessional education, community engagement, and workforce development. Through partnerships with clinical agencies and community organizations, our programs are addressing critical healthcare workforce needs while advancing health equity and access for the populations we serve. Faculty scholarship and service further enhance our impact, contributing meaningfully to education, research, and clinical practice across the region and beyond.

As we look ahead, the School of Allied Health Professions remains committed to innovation, continuous improvement, and student success. We will continue to expand opportunities for experiential learning, support faculty development, and invest in initiatives that position our graduates for leadership in healthcare.

I am deeply grateful to our students, faculty, staff, alumni, and partners for their dedication and collaboration. Together, we are shaping the future of allied health and improving the health of our communities.

Thank you for your continued support and engagement.

Warm regards,
Erin M. Dugan, PhD
Dean, School of Allied Health Professions



“ Across our programs, students, faculty, and staff have demonstrated remarkable resilience, adaptability, and dedication. Our learners continue to excel in rigorous academic and clinical environments, preparing to enter the healthcare workforce as compassionate, highly skilled professionals. Their success is a direct result of outstanding faculty mentorship, robust clinical partnerships, and a curriculum designed to meet the evolving needs of today’s healthcare systems.”

- Dr. Erin Dugan

GRANTS

The LSU Health New Orleans School of Allied Health Professions is honored to receive prestigious grants for innovative projects in 2025. These awards underscore our commitment to advancing health sciences, transforming healthcare education, and building the capacity of future professionals to better care for individuals with disabilities through the lens of social determinants of health and person-centered planning.

5 HIGHEST SAHP GRANTS IN 2025

- EARLY HEAD START** \$4,424,118

Human Development Center

Early Head Start Child Care Partnership provides high-quality early education and family support services for income-eligible children ages 6 weeks to 3 years old. Through partnerships with childcare centers, the program supports healthy child development and family stability.



- UCEDD (CORE)** \$620,675

Human Development Center

As Louisiana’s University Center for Excellence on Development Disabilities (UCEDD), HDC’s core funding works to improve inclusion, independence, and quality of life for people with developmental disabilities and their families through education, research, service, and advocacy.



- LEND** \$464,000

Human Development Center

The Louisiana Leadership Education In Neurodevelopmental and Other Related Disabilities (LEND) prepares future leaders to improve systems of care for children with autism and other neurodevelopmental disabilities through interdisciplinary training, advocacy, and family-centered practices.



- WIPA** \$265,000

Human Development Center

The West South Central Work Incentives Planning and Assistance (WIPA) helps people with disabilities understand how employment impacts Social Security and other benefits while supporting greater financial independence and employment success.



- LA DEAFBLIND PROJECT** \$167,031

Human Development Center

Louisiana DeafBlind Project for Children and Youth (LADBP) supports children and youth with combined hearing and vision loss by providing training, technical assistance, family support, and educational resources statewide.



SCHOOL AWARDS

ASSOCIATION OF SCHOOLS ADVANCING HEALTH PROFESSIONS (ASAHP) AWARDS FOR INNOVATION AND EXCELLENCE IN CLINICAL EDUCATION

Erica P. Cardosi, Au.D.

AWARD FOR INNOVATION AND EXCELLENCE IN CLINICAL EDUCATION

The LSUHSC School of Allied Health Professions is proud to recognize Erica P. Cardosi, Au.D., C-AAA and the Audiology team for receiving the Association of Schools Advancing Health Professions 2025 Award for Innovation and Excellence in Clinical Education.

Their project, **“Improving student-clinician experiences in clinical training: A program improvement project for doctor of audiology programs informed by stakeholder feedback,”** was recognized for its innovative approach to enhancing clinical education and strengthening student-clinician experiences in Doctor of Audiology training programs. This national recognition highlights the department’s commitment to advancing evidence-based, student-centered clinical education and preparing the next generation of audiology professionals.



Lyndsey Gisclair, Ph.D., MLS(ASCP)

PROGRAM OF MERIT

The LSUHSC School of Allied Health Professions celebrates Lyndsey Gisclair and the Medical Laboratory Science Department for earning Program of Merit distinction in the 2025 Association of Schools Advancing Health Professions Award for Innovation and Excellence in Clinical Education.

Their project, **“Microbiology Thought Challenger: Expanding Clinical Education Beyond the Bench,”** was recognized for advancing microbiology education through interactive learning strategies that encourage critical thinking and clinical problem-solving beyond traditional laboratory training. The honor reflects the department’s dedication to creating dynamic educational experiences that equip future laboratory professionals with the skills needed for an evolving healthcare landscape.



STUDENT AWARDS

2025 DEAN'S AWARD

The Dean's Award is presented annually to a graduating student from the School of Allied Health Professions who has made significant and demonstrable contributions through service to their academic program, the School of Allied Health Professions, the University and/or the community, and who, in the opinion of a committee of the faculty, shows excellent potential for future leadership in one of the Allied Health professions.

Savannah Samuels

PHYSICIAN ASSISTANT STUDIES

Savannah has demonstrated exceptional service to the University, the School of Allied Health Professions, and the Physician Assistant Program. She held multiple leadership roles, including LSU Student Government senator, SAHP Student Government vice president and treasurer, and SAHP Ambassador, while contributing to initiatives such as the Hunger-Free Campus Initiative and the Holiday Food Drive. Within the PA program, she supported admissions, recruitment, and student engagement efforts. Her community service includes NAMI Walks, MLK Day of Service, and collaborative outreach events. Savannah's leadership and commitment exemplify service and advocacy across LSU Health.



2025 AMERICAN PHYSICAL THERAPY ASSOCIATION MINORITY SCHOLARSHIP AWARD

Dr. Kezia Robinson

This prestigious honor is given to only eight students nationally. Dr. Robinson is an exceptional student and an emerging leader in physical therapy. Known for her academic excellence, compassionate care, and unwavering commitment to health equity, Kezia stands out as a role model in the field. Her dedication to serving underrepresented communities and advancing inclusive healthcare practices exemplifies the spirit of this award.

2025 CHANCELLOR'S AWARD

The Chancellor's Award is presented annually to a graduating student from the School of Allied Health Professions who has demonstrated the highest level of academic and scholarly excellence. Selection is made by a committee of the faculty appointed by the dean.

Easton Guilbeau

PHYSICAL THERAPY

East exemplifies leadership, advocacy, and compassion as a future physical therapist. He excelled academically and clinically across diverse settings, from pediatric outpatient to acute care, while providing

dedicated service to SAHP, LSU Health, and the New Orleans community. As Student Government President and SAHP ambassador, he elevated student voices and advanced initiatives like the Hunger-Free Campus pantry. His commitment to inclusion led to a health equity leadership role, and his service—from Special Olympics to Toys for Tots—reflects deep dedication. East leads with purpose, energy, and a lasting commitment to improving healthcare.



It was a privilege to teach Dr. Robinson during her time in the DPT program and to watch her grow into an outstanding clinician and leader. Her curiosity, genuine compassion, and strong work ethic set her apart, and our profession is truly better with her in it."

-PT Faculty Ngozi Akotaobi, PT, DPT

SAHP YEAR IN REVIEW

SPRING 2025

JANUARY

SAHP STUDENT
ORIENTATION



FEBRUARY

SUPER FEST
2025



APRIL

SAHP SOIREE
2025



JUNE

PARTNER DAY
2025



PT WHITE COAT
CEREMONY

JANUARY



CHAPELLE HIGH
SCHOOL VISIT

MARCH



COMMENCEMENT
2025

MAY



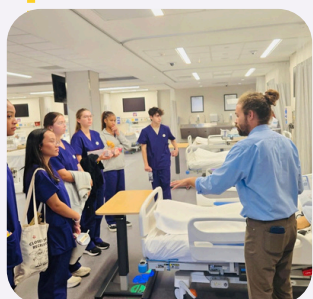
TIGERS AND
TOTS GRAND
OPENING

JUNE

FALL 2025

JULY

AHEC OF A SUMMER 2025



SEPTEMBER

CELEBRATING MILESTONE YEARS OF SERVICE



NOVEMBER

NATIONAL ALLIED HEALTH WEEK



DIGITAL ACCESSIBILITY SEMINAR

AUGUST



FALL JOB FAIR

OCTOBER



SAHP HOLIDAY PARTY 2025

DECEMBER



COMMUNITY EVENTS



Super Fest 2025

February 8, 2025 at John Curtis Christian School



NOLA Stem Fest

March 15, 2025 at the Louisiana Superdome



Day at the Capitol

April 23, 2025 at the Baton Rouge Capitol



Sensory Friendly Play Time

September 4, 2025 at the Louisiana Children's Museum



Alumni Beach Volleyball Tournament

November 7, 2025 at Coconut Beach



Graduation and Alumni Event

May 9, 2025 at Wrong Iron

ALUMNI EVENTS

Don't miss out on the SAHP's exciting community and alumni events! Whether you're looking to reconnect with classmates, expand your professional network, or simply have fun, our events offer something for everyone. Be a part of our vibrant community and help us continue the tradition of excellence and camaraderie. Stay connected, get involved, and join us at our next event.

FOLLOW US!

Follow us and stay tuned for email updates for upcoming events.



WEBSITE

alliedhealth.lsuhs.edu



FACEBOOK

LSUHSC, School of Allied Health



INSTAGRAM

@lsuhealth_neworleans_sahp

COMMUNITY INITIATIVES

TIGERS AND TOTS

In 2025, the LSUHSC School of Allied Health Professions proudly unveiled the Tigers & Tots Indoor Playground, a vibrant new space designed to support children, families, and future healthcare professionals alike.

Made possible through a grant from the Agenda for Children’s Early Childhood Opportunity Fund, the Tigers & Tots Indoor Playground is more than just a play space. Managed through the Department of Counseling’s Child and Family Counseling Clinic, the facility provides families with a safe, engaging environment for play while also serving as a dynamic, hands-on training site for students.

Learners across multiple SAHP programs—including Audiology, Counseling, Occupational Therapy, Physician Assistant Studies, Physical Therapy, Speech-Language Pathology, and Early Childhood Initiatives—benefit from real-world experience in a setting that fosters growth, observation, and interdisciplinary collaboration.

By blending play, education, and clinical training, the Tigers & Tots Indoor Playground reflects SAHP’s mission to advance healthcare education while directly supporting the well-being of the community.

PLAY HOURS

Monday – Friday
9:00AM–12:00 PM
1:00PM–5:00PM

REGISTER TO PLAY!

Visit our website to sign-up:
www.alliedhealth.lsuhsoc.edu/tigersandtotsindoorplayground/



2025 BY THE NUMBERS



ENROLLMENT

SPRING 2025

Audiology	34	
Speech-Language Pathology	45	
Physical Therapy	102	
Occupational Therapy	103	
Counseling	25	
Physician Assistant Studies	103	
Cardiopulmonary Science	23	
Medical Laboratory Science	52	

GRADUATES BY SEMESTER

Spring 2025	159
Summer 2025	2



DEPARTMENT OF COMMUNICATION DISORDERS
AUDIOLOGY
ACADEMIC PROGRAM

ABOUT US

The LSUHNO Audiology Program continues to promote excellence and compassion in audiological care.

The program provides hands-on experience for students while serving the community through an on-campus clinic. With a commitment to academic success and clinical proficiency, students are empowered to become skilled audiologists, ready to make a meaningful impact in the lives of others.



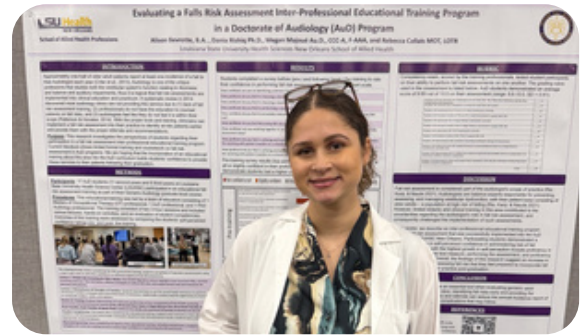
ALUMNI SPOTLIGHT



Mahsa Abedi, Au.D.
CLASS OF 2023

Mahsa now works at UTMB, providing pediatric and adult hearing care, including diagnostics, hearing aids, cochlear implants, and vestibular evaluations. She enjoys mentoring students and expanding her skills through advanced cochlear implant training. She encourages current students to learn from every opportunity and enjoy their time together in school.

STUDENT SPOTLIGHT



Alison Bevrotte
CLASS OF 2026

Alison Bevrotte has worked closely with Dr. Megan Majoue and Dr. Rebecca Callais on their ongoing fall risk research and training. This project has resulted in Alison presenting at national conferences, being asked to complete a national CE event, and winning first prize poster at the SAHP Research Day in 2025.

FOLLOW US!



www.alliedhealth.lsuhschool.edu/cd/audiologyaboutus.aspx



[AudiologyLsuhschool](https://www.facebook.com/AudiologyLsuhschool)



[@audiology_lsuhschool](https://www.instagram.com/audiology_lsuhschool)

AUDIOLOGY

ACADEMIC PROGRAM

AUDIOLOGY FACULTY DRIVING INNOVATION & COLLABORATION



Erica Cardosi, Au.D.

ASSISTANT DEAN OF ADMISSIONS, SAHP

Dr. Cardosi received the **Innovation and Excellence in Clinical Education Award** from ASAHP in 2025 and was selected through a nationally competitive process for the ASHA Leadership Program. She presented her work at national conferences and now serves as President-Elect of the Louisiana Academy of Audiology.



Emily Mutter, Au.D.

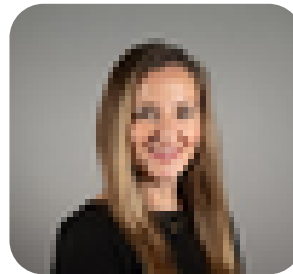
ASSISTANT PROFESSOR OF CLINICAL AUDIOLOGY

Dr. Mutter was recently appointed to the Louisiana Board of Examiners for Speech-Language Pathology and Audiology. She has expanded cochlear implant and implantable services in the campus clinic through collaboration with neurotologists, and she is partnering with dermatology to help audiologists better identify pinna pathologies, strengthening interdisciplinary care and clinical accuracy.

STRENGTHENING CRITICAL THINKING THROUGH RESEARCH

The Audiology Program was awarded funding through the **LSUHSC School of Allied Health Professions Dean's Intramural Grants Program** for the project "Critical Thinking: A Program Review of Allied Health Students." Led by Megan Guidry and Megan Majoue, this initiative will examine and enhance critical thinking development across allied health programs, supporting stronger clinical decision-making and student success.

PROMOTED FACULTY



Megan Majoue, Au.D.

ASSOCIATE
PROFESSOR OF
CLINICAL AUDIOLOGY

Dr. Majoue provides audiologic and vestibular care at LSUHSC and is recognized for managing complex cases. She teaches medical audiology and vestibular courses grounded in scientific knowledge, clinical reasoning, and evidence-based practice.



PUBLICATIONS

The Audiologist Role in Determining Cochlear Function After Gunshot Injury to the Temporal Bone

MAJOUE, M., ABEDI, M., HURLEY, A.

The purpose of this study is to explain the need for successful management of penetrating head injuries, demonstrate the role of the audiologist in determining cochlear function after gunshot injury to the temporal bone, and discuss the importance of interdisciplinary approach involving audiologists and physicians. We hypothesized that early and accurate audiological assessment is critical for effective surgical intervention and patient outcomes.

Behavioral Auditory Processing Improvements After a Computer-Based Auditory Training in School-Aged Children

HURLEY, A., HEBERT, G., TURNER, R.G.

This study evaluated the effects of an eight-week computer-based auditory training (CBAT) program on behavioral measures of auditory processing in school-aged children with learning-related listening and language difficulties. CBAT is widely used in educational settings, yet its impact on core auditory processing skills requires further clarification.

DEPARTMENT OF COMMUNICATION DISORDERS

SPEECH-LANGUAGE PATHOLOGY

ACADEMIC PROGRAM



ABOUT US

Our program is dedicated to training future speech-language pathologists who are equipped with the knowledge, skills, and compassion to make a meaningful impact in the lives of individuals with communication and swallowing disorders.

Our on-campus clinic provides services including prevention, identification, diagnosis, consultation, therapy, and remediation for persons with speech and language disorders allowing our students to gain expertise for a variety of clinical practices.

ALUMNI SPOTLIGHT



**Kristen Fernandez,
MDC, CCC-SLP**

CLASS OF 2017

Kristen Fernandez, MCD, CCC-SLP, is a distinguished alumna and founder of Spark Pediatric Therapy, a pediatric speech-language practice serving families in Greater New Orleans. She earned her master's in Speech-Language Pathology from LSU Health New Orleans in 2017. An ASHA-certified SLP and two-time ASHA ACE recipient, she is known for her neurodiversity-affirming, play-based, and family-centered approach to pediatric therapy.

FACULTY SPOTLIGHT



**Celeste Hebert,
MCD, CCC-SLP**

INSTRUCTOR, CLINICAL

Celeste Hebert, MCD, CCC-SLP joined the faculty in the summer of 2025. She is an alumna of our program and is a native of Louisiana. Celeste's areas of clinical and teaching expertise/ interests include pediatric speech and language disorders, Autism, Augmentative and Alternative Communication (AAC), and Childhood Apraxia of Speech (CAOS).



DR. LESLIE LOPEZ RECEIVES ALLEN A. COPPING EXCELLENCE IN TEACHING AWARD

The Copping Award honors Dr. Allen A. Copping, former chancellor of LSU Medical Center and later president of LSU. He established the award to recognize faculty who excel in teaching, pursue lifelong discovery, and inspire their students. Nominated by students and selected by a committee, the award is presented each May at the SAHP pre-commencement ceremony.

PUBLICATIONS

Designing for fit: Strengthening developmental monitoring in early head start

LESLIE LOPEZ, BRITTNEY WRIGHT,
BRITTANY KNOERZER

In this publication, Dr. Leslie Lopez, Brittany Wright, and Brittany Knoerzer describe implementation science work aimed at strengthening developmental monitoring in Early Head Start programs. The project grew out of a CDC grant led by Dr. Lopez and focused on designing approaches that fit the real-world context of early childhood classrooms. Dr. Lopez and Mrs. Wright are speech-language pathology faculty at LSU Health New Orleans, and Knoerzer is a student in the LSU Health Audiology program. The article highlights how interdisciplinary collaboration can support earlier identification of developmental concerns in community settings.

Promoting health equity through cross-sector strategies: The integration of communication public health

LESLIE LOPEZ, SARAH WARREN, TERESA ANTHONY, LAURA COCO

In this publication, Dr. Leslie Lopez collaborates with colleagues across speech-language pathology and audiology to explore how communication disorders intersect with public health. Working with SLP faculty Dr. Teresa Anthony (USF) and AuD faculty Dr. Sarah Warren (Memphis) and Dr. Laura Coco (San Diego State), the team proposes the concept of 'communication public health'. The article outlines a framework for integrating communication (speech, language, and hearing) into cross-sector health equity efforts, highlighting how communication access influences education, healthcare participation, and broader social drivers of health.



CAMP RAMP UP

Camp Ramp Up launched in Summer 2025 as a community literacy initiative through the LSU Health Speech-Language and Hearing Clinic. Designed to help students avoid the "summer slide," the camp uses language-based instruction grounded in reading science. Second-year LSU Health speech-language pathology graduate students administer the camp as part of their Language Disorders II course, delivering evidence-based, multisensory literacy intervention under direct faculty supervision.

FOLLOW US!



[www.alliedhealth.lsuohsc.edu/
cd/slaboutus.aspx](http://www.alliedhealth.lsuohsc.edu/cd/slaboutus.aspx)

SPEECH-LANGUAGE PATHOLOGY

ACADEMIC PROGRAM

RESEARCH

Reading Comprehension in Post-Stroke and Neurologically Healthy Adults

JORDAN LINS

Jordan investigates the impacts of reading fluency and cognition on reading comprehension in post-stroke aphasia and neurologically healthy adults. Her long-term research goal is to develop automated assessment tools for clinicians to diagnose reading disorders more accurately and efficiently. Jordan is mentored by, and works collaboratively with, faculty and researchers at New Mexico State, Old Dominion, University of Illinois-Urbana Champaign, and the University of South Alabama



Peer-Led IPE to Improve Communication Development Screening

CLAIRE SAVOIE, BRITTNEY KNOERZER, LESLIE LOPEZ

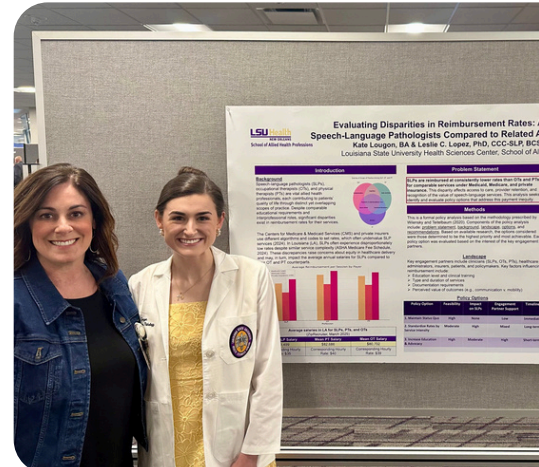
Through a HRSA-supported training initiative, LSU Health COMD students engage in interprofessional peer-led learning to strengthen developmental screening. In this activity, SLP student Claire Savoie and AuD student Brittany Knoerzer present speech, language, and hearing developmental milestones to pediatric and family nurse practitioner students in the simulation lab, helping future providers recognize early communication concerns.



Disparities in Reimbursement Rates: SLPs and Related Allied Health Professions

KATE LOUGON & LESLIE LOPEZ

This poster examines disparities in reimbursement rates for speech-language pathology services compared to occupational and physical therapy. Kate Lougon, a student in the SLP program, completed this work as a LEND Scholar under the mentorship of Dr. Leslie Lopez. The image shows Lougon presenting the project at the LSU Health SAHP's Research Day. She later presented this analysis at the American Speech-Language-Hearing Association annual conference in Washington, DC.



DEPARTMENT OF

CARDIOPULMONARY SCIENCE

ABOUT US

The Department of Cardiopulmonary Science offers a bachelor's degree in cardiopulmonary science, specializing in either **CARDIOVASCULAR SONOGRAPHY** or **RESPIRATORY THERAPY**.

Cardiovascular sonography merges cardiac sonography and vascular technology in the use of noninvasive techniques to diagnose cardiac abnormalities and circulatory system disorders. Respiratory therapy involves the evaluation, treatment and management of patients who are experiencing respiratory or cardiopulmonary disorders.



PROGRAM RECEIVES DISTINGUISHED RRT CREDENTIALING SUCCESS AWARD

Our respiratory therapy program was among a select group of programs recognized by the Commission on Accreditation for Respiratory Care to receive the Distinguished RRT Credentialing Success Award. Programs were required to:

- (1) have three or more years of outcomes data;
- (2) hold accreditation without a progress report at the end of the year;
- (3) document RRT credentialing success of 90% or above, and
- (4) meet or exceed established CoARC thresholds for TMC exam high cut score and retention.



NEW DEPARTMENT COORDINATOR

Amanda Saxon

Amanda Saxon joined the Department of Cardiopulmonary Science as department coordinator on August 1, 2025. Originally from the Alabama Gulf Coast, she has lived in New Orleans since 2008. Before LSU Health, she worked in construction and nonprofit sectors, gaining experience in operations, project coordination, and community-focused work. In her free time, she enjoys reading and paddleboarding.

PUBLICATIONS

Management of Chronic Respiratory Diseases: Evidence-Based Approaches to Asthma and COPD in Primary Care

GRACEN ZIMMERMAN; KAREN SHEFLIN, DO, FACOFP; KEVIN LORD, PHD, MHS, RRT.



GRANTS

LSU Health New Orleans School of Allied Health Professions Intramural Grants Program

KEVIN LORD (CO-PRINCIPAL INVESTIGATOR)

Dr. Lord is Co-PI on a grant with Dr. Liu (PI, physical therapy) to study the effects of deep-breathing emphasized progressive Tai Chi on the impact of cognition and overall health among older adults living in senior communities. It is a 1-month trial engaging faculty and students including physician assistants, respiratory, physical, and occupational therapists. If effective, this low-cost, adaptable intervention could provide a sustainable way to improve senior health outcomes while reducing strain on the healthcare system.



STUDENT LIFE



2025 White Coat Ceremony

On December 5, 2026, the Department of Cardiopulmonary Science proudly hosted its annual White Coat and Pinning Ceremony for the Class of 2027. This cherished milestone marked the students' official transition from foundational coursework to hands-on clinical training, while reaffirming their deep commitment to the core values of professionalism, compassionate patient care, and lifelong learning.

Far more than a symbolic ritual, the white coat tradition embodies the enduring principles of humanism in healthcare: compassion, empathy, ethical integrity, and unwavering responsibility toward those entrusted to their care. As these future cardiovascular sonographers and respiratory therapists step forward, they carry forward the promise of making meaningful contributions to patient outcomes and the broader healthcare landscape.



Flight Pathways: Students Explore Critical Care Transport

October 27, 2025, Ochsner Flight Care team members and Cardiopulmonary Science alumni Vinh Nguyen, RRT, RRT-NPS, NREMT (class of 2008) and Caroline Phillips RRT, RRT-NPS, C-NPT, NREMT (class of 2012) provided our senior respiratory therapy students with a tour of the Ochsner Health Systems, Flight Care- Rescue ONE located at the New Orleans Lakefront Airport. Students learned about the roles of respiratory therapists in air/ground transport and the steps to becoming a Flight Respiratory Therapist. They explored the physical and safety environments of an ambulance (yes, a student got to turn on the siren) and transport helicopter, just before it was loaded with equipment and personnel and took flight. It was an impactful visit!

DEPARTMENT OF COUNSELING

ABOUT US

The Master of Health Sciences degree in Counseling provides students with professional education and clinical experience to serve persons of all ages and with diverse backgrounds that have challenges related to mental, physical, developmental, cognitive, and emotional disabilities. This mission is achieved through various academic, clinical, research, and scholarly activities.



OUTSTANDING ALUMNA



Dr. Megan N. Long

Dr. Megan N. Long was named the department's first Outstanding Alumna at its 2025 White Coat Ceremony for her impact on the counseling profession through leadership, clinical work, teaching, and research. A Licensed Professional Counselor-Supervisor and Registered Play Therapist-Supervisor, she owns Nourish Counseling Studio in New Orleans. She serves as Assistant Professor and Director of CACREP Programs at Emporia State University and is the Primary Investigator for a Rehabilitation Services Administration Autism Spectrum Disorders grant. Dr. Long recently published in the International Journal of Play Therapy.

STUDENT SPOTLIGHT



Susan Ragusa

Susan Ragusa distinguished herself as an exceptional graduate of the Department of Counseling. She served as class president and as president of the Chi Sigma Iota counseling honor society, while remaining actively engaged in research and professional service. Susan's scholarly contributions included multiple presentations at departmental and school-wide research events, and her commitment to advancing the profession was recognized with the Department of Counseling Research Award.

FOLLOW US!



www.alliedhealth.lsuhsu.edu/crc/



[@counselingLSUnola](https://www.facebook.com/counselingLSUnola)



[@counseling_dept_lsuhealth_nola/](https://www.instagram.com/counseling_dept_lsuhealth_nola/)

DEPARTMENT OF
COUNSELING

FACULTY SPOTLIGHT

AWARDS



Dr. Erin Dugan

NEW ORLEANS CITY BUSINESS WOMAN OF THE YEAR

Dr. Erin Dugan, our dean and faculty member in the Department of Counseling was named one of the 2025 City Business Women of the Year! This honor recognizes exceptional women leaders in the Greater New Orleans area who have made a lasting impact through professional excellence, leadership, and community service.

Dr. Adrienne Frischhertz

LOUISIANA ASSOCIATION FOR PLAY THERAPY SENIOR SUPERVISOR AWARD

The Louisiana Association for Counselor Education and Supervision (LACES) honored Dr. Frischhertz for her dedication to mentoring play therapists, recognizing her expertise and commitment to advancing the field of play therapy.



Dr. George Hebert

For more than 20 years, Dr. George Hebert has exemplified unwavering dedication to LSU Health New Orleans School of Allied Health Professions. Since joining LSUHSC in

2005, he has been a pillar of excellence in both the Counseling and Physician Assistant Studies departments, shaping generations of students through his expertise in research methodology, mental health assessment, and interdisciplinary practice. Over the past year, Dr. Hebert has provided outstanding leadership as interim department head, guiding the department with steadiness, transparency, and a strong commitment to academic integrity

A licensed psychologist with nearly three decades of clinical and academic experience, he is recognized for his scholarship in education, behavioral health ethics, and interdisciplinary collaboration. Through mentorship, leadership, research, and service, Dr. Hebert has made a lasting impact on students, colleagues, and the broader professional community.



Dr. Adrienne Lolan Frischhertz

Dr. Adrienne Frischhertz has served with distinction as admissions chair and practicum/internship coordinator for the Department of

Counseling, strengthening student recruitment, admissions, and clinical training opportunities. Her leadership has expanded community partnerships and enhanced experiential learning for counseling students.

A Licensed Professional Counselor-Supervisor and Registered Play Therapist-Supervisor, she has nearly 20 years of experience in play therapy and child and adolescent counseling. She teaches ethics, crisis intervention, and clinical practica, and contributes scholarship through publications and presentations.



TIGERS & TOTS

Louisiana Association for Play Therapy Grant

DR. ERIN DUGAN & DR. ADRIANNE FRISCHHERTZ

On June 30, 2025, university leaders, public officials and team members assembled for an informal ribbon cutting, joined by U.S. Rep. Troy Carter to officially open the Tigers and Tots Indoor Playground. While not just a product of the Department of Counseling, the department's Child and Family Counseling Clinic manages its access to the families. The Tigers & Tots Indoor Playground was made possible by a grant from the Agenda for Children's Early Childhood Opportunity Fund. In addition to being a play space, the indoor playground serves as a hands-on training environment for students enrolled in LSU Health School of Allied Health Professions programs including Audiology, Counseling, Occupational Therapy, Physician Assistant Studies, Physical Therapy, Speech-Language Pathology, and Early Childhood Initiatives.

PUBLICATIONS

Behavioral Auditory Processing Improvements after Computer Based Auditory Training in School-Aged Children

HURLEY, A., HURLEY, R., HEBERT, G., & TURNER

Open Journal of Otolaryngology, 6(1) 17-23.
<https://doi.org/10.22259/2639-3603.0601004>

Developmental Disabilities

MCDERMOTT, B. AND HEBERT, G.

In Kapoor, R., Tamburello, A., Knoll, J., & Metzner, J. (Eds) Oxford Textbook of Correctional Psychiatry, 2nd ed (New York) ISBN13: 9780197774007

RESEARCH HIGHLIGHTS

The Roles of Depression and Anxiety on Activities of Daily Living

HEBERT, G., FRISCHHERTZ, A., & DUGAN, E.

Paper presented at the annual conference of the International Association of Psychology and Counseling, New Orleans, LA.

Peripartum Depression: Investigations of Demographic and Prevalence Rate Differences

FRISCHHERTZ, A. & HEBERT, G.

Paper presented at the annual conference of the International Association of Psychology and Counseling, New Orleans, LA.

Section 504 Accommodations for the ACT and SAT: Inconsistencies with Current Louisiana Practices.

HEBERT, G.

Invited paper presented at the annual conference of the Louisiana School Psychology Association, Lafayette, LA.

DEPARTMENT OF MEDICAL LABORATORY SCIENCE

ABOUT US

Medical laboratory scientists (medical technologists/ clinical laboratory scientists) perform analytical tests on blood and body fluids. As vital members of the health care team, they provide information necessary for the prevention, diagnosis, and treatment of disease. Medical Laboratory Science is a profession requiring precise and accurate evaluation techniques and keen problem-solving and judgment skills.



FACULTY SPOTLIGHTS



**Tabitha Taylor, M.S.,
MLS (ASCP)**

**CLINICAL ASSISTANT
PROFESSOR**

The LSUHSC MLS Program proudly welcomed alumna Tabitha Taylor to our faculty in Summer 2025. She earned a BS in Biology from ULM, a BS in Medical Technology from LSUHSC, and an MS in Health Administration from LSUS, building expertise in laboratory science and leadership. Tabitha brings clinical experience from several Northshore hospitals and as a travel laboratory scientist. Passionate about mentoring future MLS professionals, she returns with energy, experience, and dedication.



**Lyndsey Gisclair,
Ph.D., MLS (ASCP)**

**ASSISTANT PROFESSOR
OF CLINICAL MEDICAL
LABORATORY SCIENCE**

Dr. Lyndsey Gisclair, Clinical Assistant Professor of Medical Laboratory Science, proudly earned her Ph.D. in Microbiology, Immunology and Parasitology from LSUHSC in May 2025. Her dissertation, *Trypanosoma cruzi* Infection-Induced Cardiac Microvascular Endothelial Cell Dysfunction, advances understanding of infection-related vascular damage. We celebrate Dr. Gisclair's dedication to research, scholarship, and the continued excellence she brings to our MLS program.



ALUMNI SPOTLIGHT

Mario Brown, MLS (ASCP) | MLS Class of 2023

Mario Brown, BS, MLS, continues to make an impact in laboratory medicine and MLS education. A 2023 LSUHSC graduate, he served as a dedicated tutor in hematology and immunology, developing quizzes and practice exams to support student success. Mario now serves as laboratory education coordinator in hematology at Ochsner Medical Center, where he oversees training and competency for allied health students and laboratory staff.

DEPARTMENT OF
**MEDICAL LABORATORY
SCIENCE**

LCMC HEALTH PIPELINE PROGRAM (HPP)

The LSUHSC Medical Laboratory Science Program partnered with LCMC Health through the Healthcare Profession Pipeline Scholars Program to support students pursuing MLS careers. This education to employment initiative provides tuition assistance through a forgivable loan in exchange for full time employment within LCMC Health after graduation and certification.

2025 MLS HPP Scholars



Marianne
Alexis



John
Crowley



Kyla
Evans



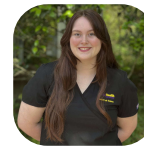
Phoenix
Finton



Meera
Patel



Isabella
Plews



Daisy
Singletary

BETTY LYNNE THERIOT SCHOLARSHIPS

This prestigious award from LSUHSC recognizes academic excellence, professionalism, and commitment to healthcare. Their selection reflects outstanding achievement and dedication, as well as the strength and supportive culture of the MLS program. We proudly celebrate their success and continued accomplishments.



Joel
Gabourel



Jasmine
Holcomeb



Vy
Nguyen



Michelle
Perkins



Taylor
Wiley

ASCP DR. ALVIN RING EMPOWERMENT SCHOLARSHIP FOR LABORATORY STUDENTS

Xavier Cruz Maldonado was recognized in 2025 as a recipient of the national ASCP Dr. Alvin Ring Empowerment Scholarship, a competitive award honoring outstanding laboratory science students across the country.



Xavier Cruz
Maldonado

DEPARTMENT OF
**MEDICAL LABORATORY
SCIENCE**

AWARDS

MLS Students Bring Home the Gold (and Bronze!)

Medical Laboratory Science students proudly earned 1st and 3rd Place in the **Louisiana Mississippi Bi-State Student Bowl**, a highly competitive regional event covering all major areas of clinical laboratory science. Competing against top programs, the teams demonstrated exceptional knowledge, teamwork, and rapid critical thinking under pressure. Their success reflects the academic excellence, preparation, and dedication of our students and the continued strength of the LSUHSC MLS program.



1ST PLACE TEAM

Alex Vedros
Joel Gabourel
Sophia Leith
Kaylynn Poublanc
Elizabeth Labranche
Jasmine Holcomeb

3RD PLACE TEAM

Matthew Thiaville
Emily Menesses
Xavier Cruz Maldonado
Michelle Perkins
Vy Nguyen

RESEARCH

Evaluating the Impact of Sequentially Scaffolded Virtual Simulations on Clinical Reasoning Skills in Medical Laboratory Science Students

Joanie Brocato, Ph.D., Lyndsey Gisclair, Ph.D., and Daniel Haun

This study examines the impact of sequentially scaffolded virtual simulations on clinical reasoning in Medical Laboratory Science students. Using progressively complex virtual patient cases, students engage in structured decision making to strengthen data interpretation and clinical correlation. Early findings show improved analytical thinking, diagnostic accuracy, and confidence. The project supports simulation as a high impact strategy and reflects LSUHSC's commitment to innovative teaching.



FOLLOW US!



www.alliedhealth.lsuhsoc.edu/cl/



[Lsuhsoc New Orleans - Dept. of CLS](#)

DEPARTMENT OF OCCUPATIONAL THERAPY

ABOUT US

The Occupational Therapy Department at LSU Health New Orleans School of Allied Health Professions prepares the next generation of occupational therapy practitioners through its Master of Occupational Therapy (MOT) program. This 23-month, 82-credit hour entry-level master's program combines rigorous academic coursework with hands-on clinical training, including 24 weeks of Level II fieldwork. Through innovative instruction, research opportunities, and community partnerships, the department equips students with the clinical reasoning, compassion, and practical experience needed to support health, independence, and participation across the lifespan.



ADVANCING PRACTICE

The students were busy in 2025 enriching their education through attendance at continuing education. Three students from MOT 2026 attended the AOTA Conference in Philadelphia, representing LSUHNO at the Assembly of Student Delegates meeting. Four students completed the Herman & Wallace Pelvic Function I course, preparing them for practice in this specialty area, and eight students became certified in LSVT-BIG intervention to improve the function of people with Parkinson's disease.



EXPANDING IMPACT

The students also enriched their education through OT-related volunteer work. Twenty students from MOT 2026 and 2027 volunteered to run the Sensory Booth at SuperFest, an event for children with special needs to participate in Super Bowl activities and 15 volunteered at LSU-Day at the state Capitol, administering balance and grip strength assessments and educating legislators about OT.



SHOWCASING INNOVATION

In 2025, the Department held its third annual Occupational Therapy Research Day. The students gave professional presentations of their capstone projects at this free CEU event to classmates, faculty, and community OTPs. We hope to continue to build OTP presence at Research Day to educate on the traditional and non-traditional areas of OT our students are exploring with their capstone projects, to build research partnerships with community OTPs, and to demystify the research process.

DEPARTMENT OF
**OCCUPATIONAL
THERAPY**

EVENTS AND COMMUNITY

**CLINICAL PRACTICE
ENHANCES REAL-WORLD
LEARNING**



Several of the Department's faculty now have on-site clinical practice in a variety of specialty areas. These on-site practices enrich student learning experiences and capstone projects.



Rebecca Callais
**Vestibular
Rehabilitation**



Jessica Allemand
**Pelvic Floor Rehab;
Neuro Rehab**



Brandon Walker
**Pediatrics with a
Specialty in Feeding**

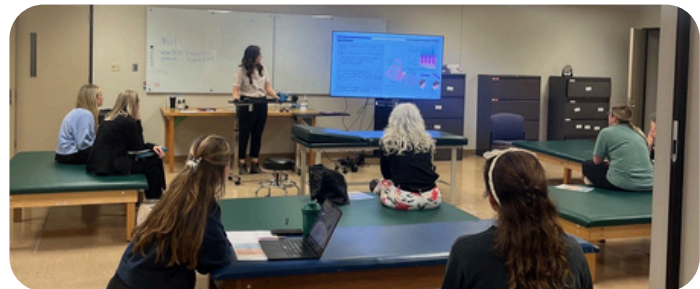


Lacy Poiencot
**Pediatrics with a
Specialty in Orthopedics**



SuperFest Sensory Booth

Faculty member Dr. Brandon Walker created the Sensory Booth area at SuperFest, an event for children with special needs to enjoy the buzz around the Super Bowl in New Orleans. The booth was a huge hit with children of all abilities, and the founder of the event requested information so that what Dr. Walker created could be replicated around the country in every Super Bowl city.



Summer CEU Conference

The Department of Occupational Therapy was very pleased to re-start an annual tradition of holding a full-day CEU conference each summer. In 2025, we had the first of many to come and it was a tremendous success. Feedback from attendees was that the variety of workshops by our faculty were extremely informative and they appreciated interacting in-person with fellow OTPs. Save the date for our 2026 summer CEU event on Friday, July 17!

DEPARTMENT OF
**OCCUPATIONAL
THERAPY**

AWARDS

The Department of Occupational Therapy is proud that two of our faculty were recognized for their service contributions. Dr. Brandon Walker was awarded the Chancellor's Excellence Award for his work on the SAHP Strategic Plan, and Dr. Ingrid Franc was awarded the SAHP Award for Outstanding Professional Services for her work as chair of the Occupational Therapy Advisory Committee of LSBME.



Brandon Walker
CHANCELLOR'S
EXCELLENCE
AWARD



Ingrid Franc
OUTSTANDING
PROFESSIONAL
SERVICES, SAHP
AWARD

PUBLICATIONS

Fall Risk Assessment Training for Audiologists and Student Clinicians

REBECCA CALLAIS AND MEGAN MAJOUE

Rebecca Callais, DrOT, OTR/L collaborated with faculty from the Department of Audiology on Inter-professional Fall Risk Assessment Training for Audiologists and Student Clinicians, presenting this at the American Academy of Audiology National Conference, and recording it as a webinar that has received 123 five-star reviews from audiologists.

Effects of LSVT BIG on Bradykinesia During Activities of Daily Living

INGRID FRANC, BARBARA DOUCET, AND MARK BLANCHARD

Ingrid Franc, PhD, OTR/L co-published a study in OTJR: Occupational Therapy Journal of Research, Effects of LSVT BIG on Bradykinesia during Activities of Daily Living. Dr. Franc was subsequently invited to be on a podcast sponsored by LSVT Global which has been viewed 648 times!



FOLLOW US!



www.alliedhealth.lsuhschool.edu/ot/



[@lsuhsc.ot.nola](https://www.facebook.com/lsuhsc.ot.nola)

DEPARTMENT OF PHYSICAL THERAPY

ABOUT US

The Department of Physical Therapy at LSU Health New Orleans School of Allied Health Professions prepares future physical therapists through its Doctor of Physical Therapy (DPT) program. Established in 1971, the program combines a strong foundation in scientific knowledge with hands-on clinical training to develop graduates with outstanding skills in diagnosis, clinical reasoning, program planning, and therapeutic intervention. Guided by experienced faculty and supported by state-of-the-art facilities in the heart of the LSU Health New Orleans medical complex, students gain the knowledge and practical experience needed to improve movement, function, and quality of life for the individuals and communities they serve.



ALUMNI SPOTLIGHTS



Kezia Robinson

CLASS OF 2025

Dr. Robinson is an emerging leader in physical therapy. Known for her academic excellence, compassionate care, and unwavering commitment to health equity, she stands out as a role model in the field. Her dedication to serving underrepresented communities and advancing inclusive healthcare practices exemplifies the spirit of this award. Dr. Kezia Robinson will soon start her career as a pediatric physical therapist at Manning Family Children's Hospital.



David Regan

CLASS OF 1974

The Department of Physical Therapy is thrilled to spotlight Mr. David Regan, Class President of the Class of 1974. Raised in a small rural community in southern Louisiana, Mr. Regan was the youngest of nine children—and the only one to pursue higher education. He reflected on how fortunate he was to have the opportunity, desire, drive to attend college, ultimately continuing on to physical therapy school. He describes his life and career as deeply meaningful, humbly grateful for his journey.

DEPARTMENT OF
PHYSICAL THERAPY

GRANTS AWARDED

LSUHSC School of Allied Health Professions Intramural Research Grant

LIU H, LORD K, ATIYEH K, BOOTH B, FRANC I AND GIORDANO KA, AKOTAABI N

Effects of Deep-Breathing Emphasized Progressive Tai Chi Exercise on Multimorbidity in a Senior Living Community – An Exploratory Crossed Randomized Controlled Trial.

Rehabilitation Exercise Muscle Activation Across Resistance Modalities Through a Full Arc of Motion.

LSUHSC Wide Intramural Research Program

GIORDANO KA, PHILLIPS IV P, HARTMAN M
Factors Contributing to Shoulder Girdle Compensation in Patients with Rotator Cuff Tears

FOLLOW US!



www.alliedhealth.lsuhschool.edu/pt/



[@LSUHealthNewOrleans.PT](https://www.facebook.com/LSUHealthNewOrleans.PT)

FACULTY SPOTLIGHTS



Ngozi Akotaobi, PT, DPT, COMT, FAAOMPT

ASSISTANT CLINICAL PROFESSOR

Dr. Akotaobi joined our faculty in November 2022 and has quickly become a valued leader in both education and the profession. A graduate of Loma Linda University and a Fellow of the North American Institute of Manual Therapists (NAIOMT), Dr. Akotaobi is passionate about advancing physical therapy through teaching, mentorship, and professional service.



Ha Hoang, Ph.D., PT

ASSOCIATE PROFESSOR

Dr. Hoang carried an extraordinary leadership and service load throughout 2025, serving in multiple roles that are foundational to the governance and academic quality of the Physical Therapy program. Her leadership strengthened governance, enhanced educational quality, and advanced the school's mission with unwavering dedication.



**Outstanding
Alumni Award
from The
University of
Scranton**

RACHEL WELLONS, PT, DPT, BOARD
CERTIFIED CLINICAL SPECIALIST IN
NEUROLOGIC PHYSICAL THERAPY

Dr. Wellons received the Outstanding
Alumni Award from the University of
Scranton for her work and leadership
in the areas of neurorehabilitation
and vestibular physical therapy.

PUBLICATIONS

**Description and
Consistency of In-Game
Pitching Kinetics'
Relationship With Ball
Velocity**

GIORDANO, K., NEBEL, A. R.,
LERCH, B., & OLIVER, G. D

International Journal of Sports
Medicine. DOI 10.1055/a-2640-
8863.

**Age-related trajectories
of muscle strength and
power in individuals with
cerebral palsy and the
relationship to walking
capacity**

PONTIFF ME, MOREAU NG

Gait Posture. 2025 Jul;120:66-71.
doi: 10.1016/j.gaitpost.2025.03.028.
Epub 2025 Apr 3. PMID: 40188701.

AWARDS



2025 John P. Maley Award

NOELLE G. MOREAU, PHD, PT

Dr. Noelle Moreau received the 2025 John P.
Maley Award from the American Physical
Therapy Association (APTA) for outstanding
leadership in research.



2025 Gayle G. Arnold Award

NOELLE G. MOREAU, PHD, PT

Dr. Noelle Moreau received the 2025 Gayle G.
Arnold Award from the American Academy
of Cerebral Palsy and Developmental
Medicine for Best Scientific Paper.

**Best Podium Abstract
Submission for CSM 2025**

NOELLE G. MOREAU, PHD, PT

Dr. Noelle Moreau was recognized by the
APTA Academy of Pediatric Physical Therapy
for the best podium abstract at CSM 2025
for "Power Training Combined with Interval
Treadmill Training to Improve Walking
Activity in Cerebral Palsy."

DEPARTMENT OF PHYSICIAN ASSISTANT STUDIES

ABOUT US

With a focus on primary care, the LSUHNO Department of Physician Assistant Studies awards a Master of Physician Assistant Studies degree following 29 months of intensive academic and clinical training. Of the 29 months, the 17-month academic phase is conducted in New Orleans with state-of-the-art training equipment and facilities. A 12-month clinical experience is conducted at a variety of sites throughout Louisiana.



FACULTY SPOTLIGHTS



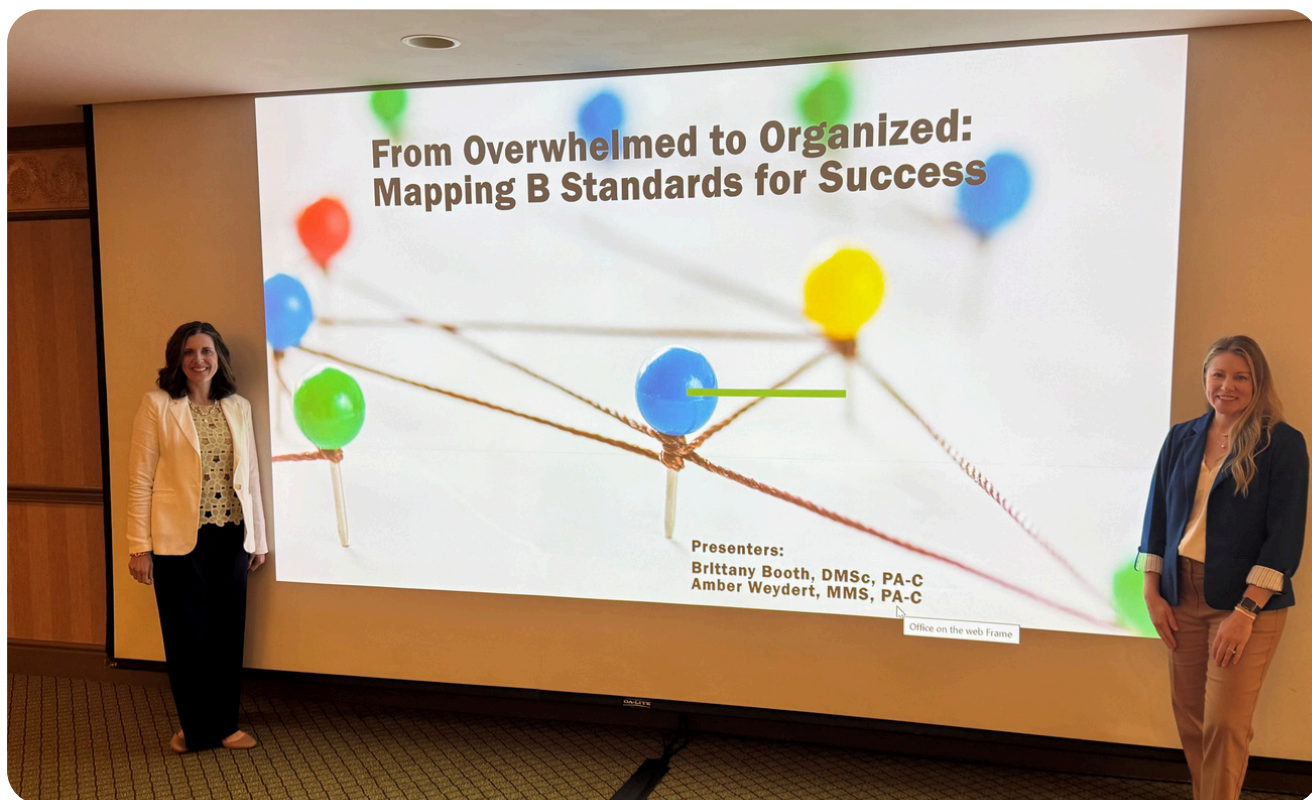
Brittany Hall & Brittany Booth CHANCELLOR'S AWARD WINNERS

Brittany Hall and Brittany Booth were honored with the Chancellor's Award at the LSU Health Sciences Center New Orleans, a prestigious recognition presented to faculty and staff who demonstrate exceptional excellence, leadership, and service to the institution. The award celebrates individuals whose work significantly advances the university's mission and positively impacts students, colleagues, and the broader health care community.

10TH ANNIVERSARY CELEBRATION



The PA Program celebrated its 10th Anniversary with an evening at Rock 'n' Bowl, bringing together faculty, students, alumni, preceptors, and supporters. The celebration honored a decade of excellence in PA education, recognized the achievements of our graduates, and reflected on the program's continued growth and impact. It was a meaningful night of connection, gratitude, and excitement for the future.



From Overwhelmed to Organized: Mapping B Standards for Success

BRITTANY BOOTH, DMSC, PA-C AND AMBER WEYDERT, MMS, PA-C

At the annual Accreditation Review Commission on Education for the Physician Assistant Conference, Brittany Booth and Amber Weydert presented "From Overwhelmed to Organized: Mapping B Standards for Success." The session provided a structured, step-by-step framework for aligning didactic curriculum with ARC-PA B Standards, offering practical mapping tools, documentation strategies, and workflow systems to streamline accreditation preparation and support continuous program improvement.

FOLLOW US!

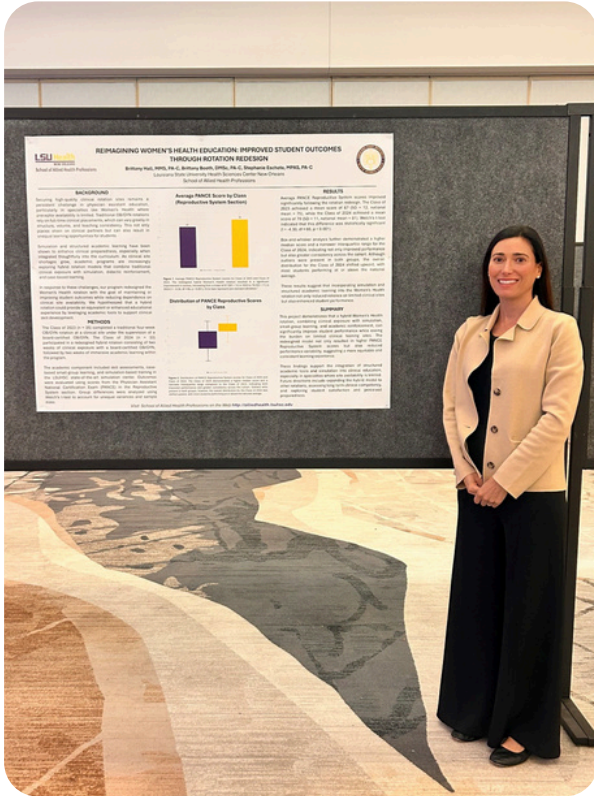


www.alliedhealth.lsuhsac.edu/pa/



[@paprogram.neworleans](https://www.facebook.com/paprogram.neworleans)

DEPARTMENT OF
**PHYSICIAN ASSISTANT
STUDIES**



Reimagining Women's Health Education: Improved Student Outcomes Through Rotation Redesign

BRITTANY HALL, MMS, PA-C,
BRITTANY BOOTH, DMSC, PA-C,
STEPHANIE ESCHETE, MPAS, PA-C

At the annual ASHAP Conference Poster Presentation session, Brittany Hall, Brittany Booth, and Stephanie Eschete presented "Reimagining Women's Health Education: Improved Student Outcomes Through Rotation Redesign." The project examined a hybrid OB/GYN rotation combining clinical exposure with simulation and structured academic learning.



Enhancing Clinical Reasoning Through a Written OSCE: A Novel Assessment Approach

AMBER WEYDERT, MMS, PA-C AND
BRITTANY BOOTH, DMSC, PA-C

At the annual ASHAP Conference Poster Presentation session, Brittany Booth and Amber Weydert presented "Enhancing Clinical Reasoning Through a Written OSCE: A Novel Assessment Approach." The project introduced a Written OSCE designed to capture students' clinical reasoning by requiring written justification of diagnostic and management decisions.

HUMAN DEVELOPMENT CENTER

ABOUT US

The Human Development Center (HDC) at LSU Health New Orleans is Louisiana's University Center for Excellence in Developmental Disabilities (UCEDD).

HDC serves as a resource to people with disabilities and their families, service providers in health, education, and rehabilitation, and policy-makers. Our mission is to build Louisiana's capacity to ensure that people with disabilities are able to participate fully in all aspects of community life.

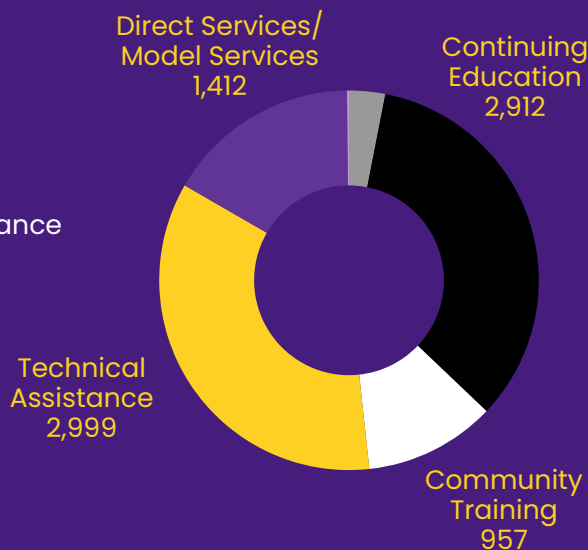


SERVICES PROVIDED

As a UCEDD, HDC is tasked to fulfill the purpose of the Developmental Disabilities Assistance and Bill of Rights Act through interdisciplinary training, research, and community service.

Our services reached **8,557** individuals in the 2025 fiscal year.

- Continuing Education
- Interdisciplinary Training
- Community Training
- Technical Assistance
- Direct Services
- Misc



OUR FOCUS

HDC's programs currently focus on the following areas:

-  Early Childhood Education
-  Inclusive Education
-  Deafblind Support
-  Fetal Alcohol Spectrum Disorders Education
-  Postsecondary Transition
-  Competitive Integrated Employment
-  Work Incentive Planning
-  Interdisciplinary Training
-  Community Health

For a full look at our programs, visit www.hdc.lsuhsu.edu.

HUMAN DEVELOPMENT CENTER

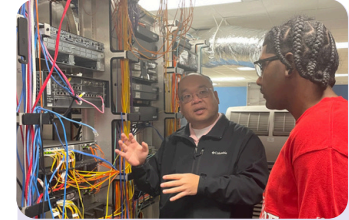
STATEWIDE IMPACT THROUGH STRATEGIC COLLABORATIONS FOR FISCAL YEAR 2025

The Human Development Center’s impact is powered by hundreds of collaborations across Louisiana, connecting systems that support individuals and families. Through partnerships with school districts, early childhood centers, employment providers, healthcare systems, and community organizations, HDC expanded access to training, resources, and opportunities statewide.

As Louisiana’s federally funded UCEDD, HDC believes that disability is a natural part of being human and works to support people with disabilities so they can live, work, and take part in everyday community life. Through partnerships with local, state, and national organizations, HDC increased the capacity of professionals who serve the disability community and improved access to helpful services and supports. In 2025, these collaboration efforts extended the Center’s reach to positively impact the lives of thousands of Louisianans each year.



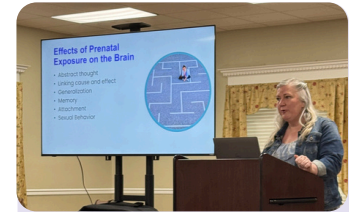
LASARD contracts with **36 School Boards** providing training & coaching



PAYCheck provides work based learning activities with **31 Employer Sites**



EHS provides training and coaching to **10 Local Child Care Centers**



FASD provided professional development to all **9 Regional DCFS Offices**



LADBP collaborated with **14 School Districts, 12 State Agencies, & 6 National Organizations**



Employment certified 72 Employment Specialists from **36 Community Rehab Providers**



HDC Faculty and staff provide subject matter expertise to over **13 Local and State-Level Advisory Boards & Committees**

FOLLOW US!



@humandevlopmentcenter_lsuho



@lsuhschdc



[Human Development Center at LSU Health New Orleans](#)

HUMAN DEVELOPMENT CENTER



BUILDING A PATH TO ACCESS FOR STUDENTS WITH DEAFBLINDNESS

PROGRAM SPOTLIGHT

The Louisiana DeafBlind Project (LADBP) at LSU Health Sciences Center Human Development Center now offers Intervener training for paraprofessionals who work one-on-one with students who are DeafBlind. An Intervener is a specially trained paraprofessional who provides consistent access to communication, learning, and environmental information.

Students with combined hearing and vision loss face unique challenges. With training in deafblindness and intervention strategies, Interveners help ensure meaningful access to education, interactions, and daily activities.



CENTERING UNDERSTANDING, NOT CORRECTION

SCHOLAR SPOTLIGHT

Jesica Bates, LEND Program

Through the LEND program at the LSU Health Sciences Center Human Development Center, 2025 scholar Jesica Bates developed "Empowering Autistic Communication Toolkit," challenging deficit-based approaches to autism.

The toolkit highlights how autistic individuals communicate, why these differences occur, and how to support them—centering communication as meaningful rather than something to fix.

This perspective also informs Jes's doctoral research, "Exploring Emotions Through Art: Perceptions and Experiences of Stimming from the Autistic Perspective," which uses artwork and narratives to elevate autistic voices.

ADVANCING DIGITAL ACCESSIBILITY ON CAMPUS

FACULTY AND STAFF SPOTLIGHT

HDC faculty member Rose Angelocci, Ph.D., and Outreach Coordinator Jolie Robichaux hosted "Designed for Everyone," a hands-on seminar equipping LSUHSC professionals with practical tools and strategies to create accessible flyers, documents, and teaching materials for all members of the community.

SAHP CLINICS

Clinics at the
LSUHNO School of
Allied Health
Professions had
3,500
visits in 2025.

Our on-campus clinics include:

- Hearing and Balance Clinic
- Counseling
- Occupational Therapy
- Physical Therapy
- Speech-Language Pathology



In addition to on-campus clinic services, our multi-specialty clinicians participate in continuous collaborative endeavors for education & service. They do so by partnering with entities small and large. They help improve and diversify clinical education opportunities for students by participating as site supervisors at various clinics throughout the community. Clinicians also provide direct services as part of practicing and promoting their clinical expertise. Some community partner sites include:

- American Hearing + Balance
- Canopy Pediatric Care, LLC
- Jefferson Parish School Board
- Early Detection Screenings, Inc.
- The VA Community Care Network (CCN)
- Communities in the Schools of the Gulf South, Inc.
- The Split-Second Foundation, Inc.
- Tulane University
- Ochsner Clinic Foundation
- Young Audiences Charter Schools

HEARING AND BALANCE CLINIC

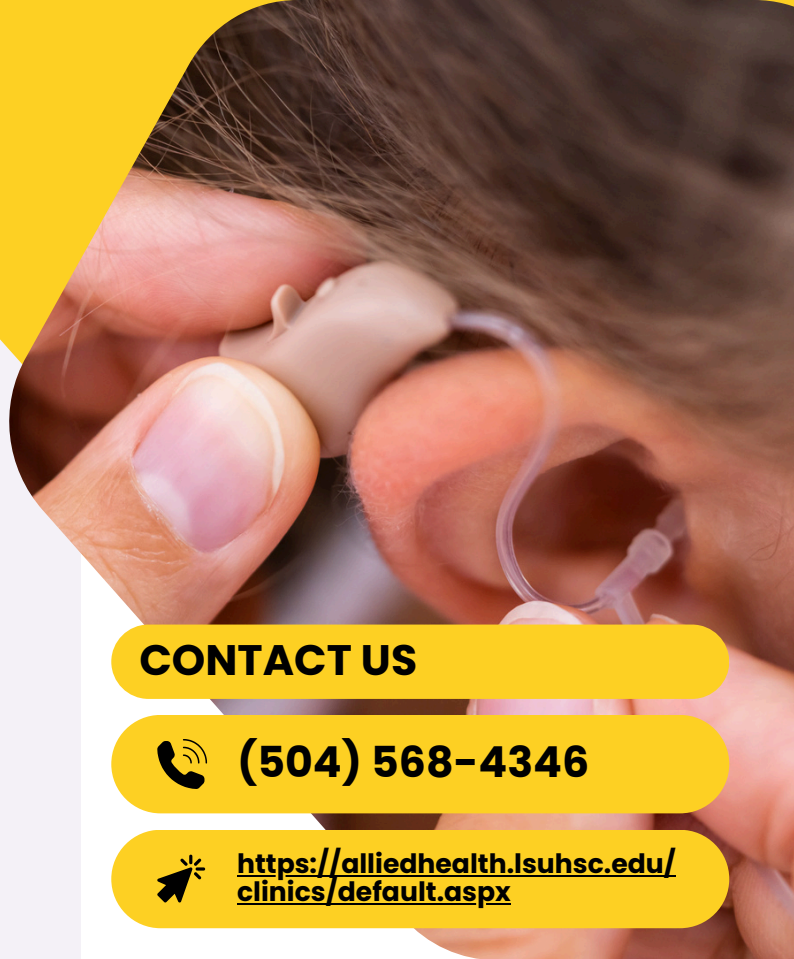
The LSUHNO Hearing and Balance Clinic provides an environment for graduate students to work with faculty providing exemplary care to a diverse patient population. The clinic offers a vast array of evidence-based services for all age ranges. It also provides an opportunity to complete research to test and provide the most current methods of audiological care.

PROVIDERS

- 👤 Megan Majoué, Au.D., CCC-A, FFF-A
- 👤 Megan Guidry, Au.D., CCC-A, FFF-A
- 👤 Erica Cardosi, Au.D., CCC-A, FFF-A
- 👤 Emily Mutter, Au.D., CCC-A
- 👤 Annette Hurley, Ph.D., Au.D., CCC-A
- 👤 Madison Humphries AuD, CCC-A

SERVICES

- + Hearing Tests
- + Balance Testing
- + Hearing Aids
- + Tinnitus Management
- + Cochlear Implant
- + Auditory Processing
- + Hearing Protection



CONTACT US

📞 (504) 568-4346

🌐 <https://alliedhealth.lsuhsu.edu/clinics/default.aspx>

The clinic offers comprehensive diagnostic evaluations including pediatric testing. Clinicians work with all major hearing aid manufacturers and use verification measures to ensure quality fittings. The Audiology Clinic works with cochlear implant patients in pre- and postoperative assessment, programming and troubleshooting, and in rehabilitation and counseling for all cochlear implant brands.

The clinic has on-site electrophysiology and vestibular equipment for students to get hands-on advanced testing.

CHILD & FAMILY COUNSELING CLINIC

The LSUHNO Child & Family Counseling Clinic is an outpatient mental health clinic designed to provide mental health services to children, adolescents, and their families. The clinic provides supervision and consultation services to students and professionals seeking to earn continuing education hours toward licensure/certification as well as provide professional development trainings and mental health consultation.

PROVIDERS

-  Erin Dugan, PhD, CRC, NCC, LPC-S, Registered Play Therapist Supervisor
-  George Hebert, Ph.D, Licensed Psychologist
-  Holly Walters, Ph.D., LPC-S, CRC
-  Deborah Allsbrook, PhD, LPC-S, NCC
-  Emily Simkiss, PLPC, MS

SERVICES

- + Individual, Group, and Family Play Therapy
- + Psychological Assessment & Testing
- + Social Skills Groups
- + Filial Therapy
- + Child Parent Relationship Therapy
- + Caregiver Consultations
- + Parent Strategies
- + Professional Consultations
- + Professional Seminars & Speaker Events
- + School Trainings/Seminars
- + Telehealth Services
- + Supervision



CONTACT US

 **(504) 556 - 3451**

 <https://alliedhealth.lsuhsu.edu/clinics/default.aspx>

The mission of the Child & Family Counseling Clinic is to encourage the unique development and emotional growth of children, adolescents, and their families through proper assessment, diagnosis and treatment.





PATIENT TESTIMONY

I tell everyone that I can about the work done by Dr. Dugan and her team!
Endlessly grateful!"





OCCUPATIONAL THERAPY CLINIC

The LSUHNO Occupational Therapy Clinic offers outpatient rehabilitation services for adults with vestibular disorders, orthopedic injuries, neurological disorders, chronic conditions, and numerous other factors affecting normal daily functioning. The clinic provides individual services and caregiver training sessions to reduce the effect of impairments and increase function in patient identified, valued occupations.

PROVIDERS

-  Rebecca Callais, MOT, Herdman
-  Jessica Allemand, LOTR
-  Brandon J. Walker, OTD, OTR/L
-  Lacy Poiencot, DrOT, LOTR, CHT

AREAS OF SPECIALTY

-  Vestibular Rehabilitation
-  Pediatric Occupational Therapy
-  Feeding and Swallowing Difficulties
-  Neurological Rehabilitation



CONTACT US

 **(504) 568-4302**

 <https://alliedhealth.lsuhsu.edu/clinics/default.aspx>





OUTPATIENT REHABILITATION SERVICES FOR ADULTS WITH:

- + Vestibular disorders
- + Orthopedic injuries
- + Neurological disorders
- + Chronic conditions
- + Numerous other factors affecting normal daily functioning




PHYSICAL THERAPY CLINIC

The LSUHNO Outpatient Physical Therapy Clinic offers physical therapy services for patients needing rehabilitation after injury, illness and a variety of other diseases that affect movement and mobility. Our therapists work with patients to reduce pain and the effects of other impairments in order to increase function to the highest attainable level based on patients' personal activity goals.

PROVIDERS

-  Rachel Wellons, PT, DPT, NCS
-  Katherine Atiyeh, PT, DPT, OCS
-  Ngozi Akotaobi, PT, DPT, COMT, FAAOMPT
-  Chrissy MacMaster, PT, DPT, PCS

AREAS OF PRACTICE

-  Pediatrics
-  Adults with Neurological Conditions
-  Adults with Orthopedic Conditions



CONTACT US

 **(504) 568-4042**

 <https://alliedhealth.lsuhsu.edu/clinics/default.aspx>



SERVICES

- + Pediatric developmental disabilities
- + Persistent joint, muscle, or nerve pain
- + Spine or extremity injuries
- + Sports injuries
- + Arthritis or degenerative conditions
- + Post-surgical recovery
- + Vestibular physical therapy assessment and treatment of dizziness and/or imbalance
- + Falls risk assessment and fall prevention training
- + Mobility, walking, and balance assessment and training for individuals with neurologic disorders

SPEECH- LANGUAGE PATHOLOGY CLINIC

The LSUHNO Speech-Language Pathology Clinic offers a full range of speech and language services for people of all ages by nationally certified and state licensed speech-language pathologists. Graduate students provide evaluations and therapy under close supervision by certified speech-language pathologists.

PROVIDERS

-  Molly Brouillette, MCD, CCC-SLP
-  Leslie C. Lopez, Ph.D., CCC/SLP, BCS-CL, CHES +B8
-  Michelle Willis, MCD, CCC-SLP
-  Brittney Wright, MCD, CCC-SLP
-  Celeste Hebert, M.C.D, CCC-SLP
-  Jordan Lins, M.S., CCC-SLP
-  Jill E. Douglass, Ph.D., CCC-SLP
-  Callee Fogg, MS, CCC-SLP

The ability to communicate our feelings, basic needs, and thoughts is taken for granted by most people; however, there are persons of all ages who are unable to communicate effectively or efficiently.

The goal of the LSUHNO Speech-Language Pathology Clinic is to provide services including prevention, identification, diagnosis, consultation, therapy, remediation and referrals for persons with speech and language disorders.



CONTACT US

 **(504) 568-4348**

 <https://alliedhealth.lsuhsu.edu/clinics/default.aspx>

SERVICES

- + Neurological disorders including stroke, TBI, brain tumors, progressive/degenerative diseases, concussion management
- + Voice & resonance disorders
- + Gender affirming voice therapy
- + Accent modification training
- + Adult and pediatric swallowing disorders
- + Language delay or disorders
- + Literacy disorders
- + Fluency disorders
- + Articulation and motor speech disorders
- + Augmentative and alternative communication (AAC)
- + Aural rehabilitation for the hearing impaired
- + Adult and pediatric swallowing disorders

SAHP RETIREMENTS

Charlaine Ritter

Department Coordinator

Cardiopulmonary Science

9 YEARS SERVED



Michael Norman, Ph.D.

Assistant Professor

Community Health Initiative
Area Director

Principal Investigator for the
DeafBlind Project

Principal Investigator for
Interprofessional Preparation
for Related Services
Personnel Serving Children
with High Intensity Needs

LEND Speech Language
Pathology Mentor Faculty

Human Development Center

10 YEARS SERVED



STUDENT ORGANIZATIONS

LSUHNO School of Allied Health Professions offers a world of opportunity through our diverse student organizations.

From professional development to community outreach, these groups are designed to enrich students' educational journey and foster lifelong connections.



SGA

The Student Government Association (SGA) at LSUHNO School of Allied Health Professions is the heart of student advocacy and leadership. Representing student interests, the SGA fosters a collaborative environment, promotes academic excellence, and organizes impactful events.

STUDENT ACADEMY OF AUDIOLOGY



The Student Academy of Audiology (SAA), the student division of the American Academy of Audiology, advocates for students pursuing audiology careers and promotes diversity and inclusion. It fosters lifelong engagement in advancing the profession and provides education, resources, representation, and advocacy.

Hearing Screenings at the Special Olympics



Advocating for hearing health at the New Orleans Kidney Walk



Volunteering at Louisiana Lighthouse for the Blind



NATIONAL STUDENT SPEECH-LANGUAGE- HEARING ASSOCIATION (NSSLHA)



The LSU Health New Orleans NSSLHA chapter promotes student leadership, professional development, and service in the speech-language and hearing professions. Members engage in advocacy, community outreach, and networking while building skills that support future careers in speech-language pathology and audiology.



LSU Health New Orleans NSSLHA students actively engage in service and advocacy. This year, members participated in the annual Louisiana Speech-Language-Hearing Association (LSHA) conference in Shreveport, raised funds to support Team Gleason, and represented the speech-language and hearing professions during LSU Health Day at the Louisiana Capitol.

STUDENT PHYSICAL THERAPY ASSOCIATION



The Student Physical Therapy Association (SPTA) at LSUHNO School of Allied Health Professions is dedicated to advancing the field of physical therapy through student engagement and professional development. The SPTA organizes educational workshops, community outreach programs, and networking events to enhance clinical skills, promote health awareness, and foster connections within the physical therapy community.



The SPTA hosted a kickball tournament in 2025.

PI THETA EPSILON

Pi Theta Epsilon is the National Occupational Therapy Honor Society.



SOTA

SOTA is an organization that fosters professional growth, leadership, and community service for OT students. SOTA membership provides networking and advocacy training through affiliation with the American Occupational Therapy Association (AOTA) and the Louisiana OT Association.

The Student Occupational Therapy Association continued many traditions in 2025 such as recognizing student birthdays, organizing a Halloween potluck and costuming, and creating a welcoming atmosphere for first year students, as well as expanding the department's presence on social media. We are grateful to SOTA and what they add to the culture of our department.

COTAD

The Coalition of Occupational Therapy Advocates for Diversity network of OT practitioners, students, and educators working to make health equity a priority at all levels of healthcare.



CHI SIGMA IOTA



Chi Sigma Iota (CSI) is an international honor society for counseling students, educators, and professionals. It promotes excellence in scholarship, research, leadership, and service within the counseling field, while also supporting professional development and community engagement.



2025 Events

Fall Welcome Back Lunch

NAMI Walk

Metropolitan Human Services Authority Walk

SAHP Self-Care Day



STAY IN THE KNOW WITH LSU HEALTH-NO



WEBSITE

www.alliedhealth.lsuhs.edu



FACEBOOK

LSU Health Sciences Center,
School of Allied Health Professions



INSTAGRAM

@lsuhealth_neworleans_sahp



X

@LSUHealth_SAHP



DONATE TO SAHP!

Visit give.lsuhealthfoundation.org/givenow
or scan the QR code.

Remember to select an Allied Health department
from the **Designation** options.



Designation: Allied Health - Excellence Fund

THANK YOU!



**YOUR GIFT MOVES
SAHP EXCELLENCE
FORWARD.**